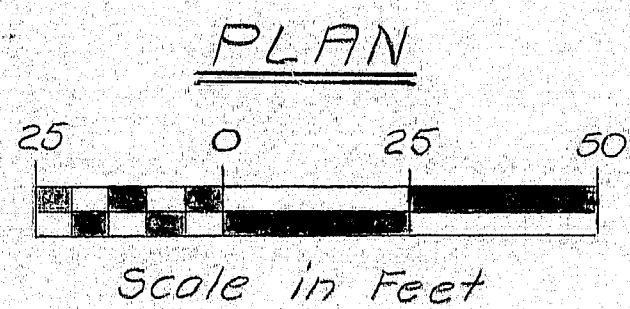
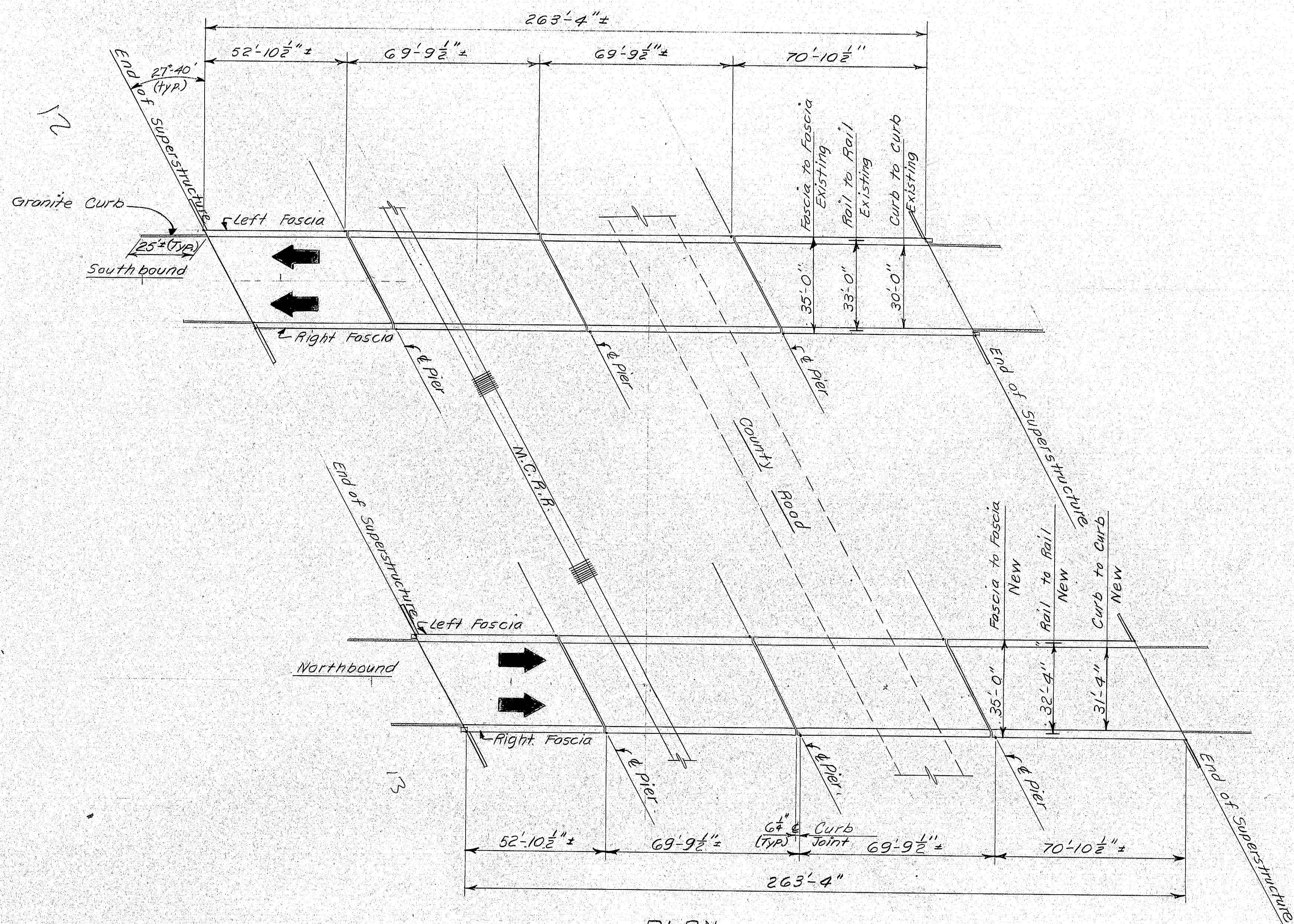
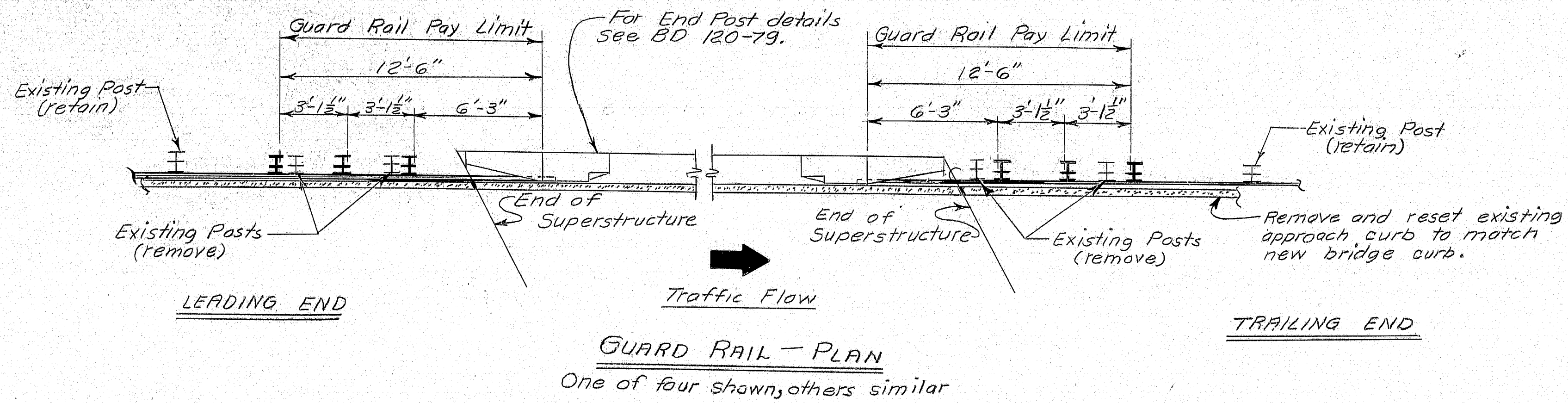


F.H.W.A. REG. NO.	STATE	PROJECT NUMBER	SHEET NO.	TOTAL SHEETS
1	MAINE	35-6(54)105	6	18



NOTE  
Bituminous hand sealing applied to  
new hot-top in curb area 3' wide.

PROJECT DESIGN ENGINEER	DATE
DESIGN - DETAIL	10/79
CHECKED	2/80
REVISIONS	
FIELD CHANGES	

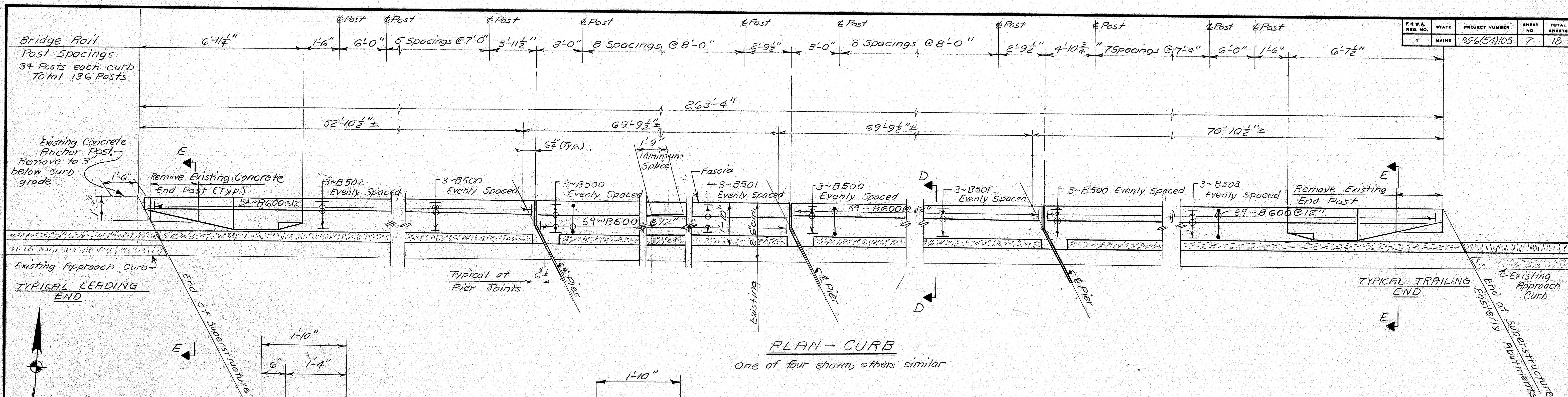


Revised as Built - D. Sherlock, 1-26-81  
STATE OF MAINE  
DEPARTMENT OF TRANSPORTATION  
**INTERSTATE 95**  
OVER  
**M.C.R.R. &  
COUNTY ROAD**  
IN THE CITY OF  
**WATERVILLE**  
KENNEBEC COUNTY  
GENERAL PLAN  
SHEET 6 OF 18 AUGUSTA, MAINE Nov. 1979

172-120

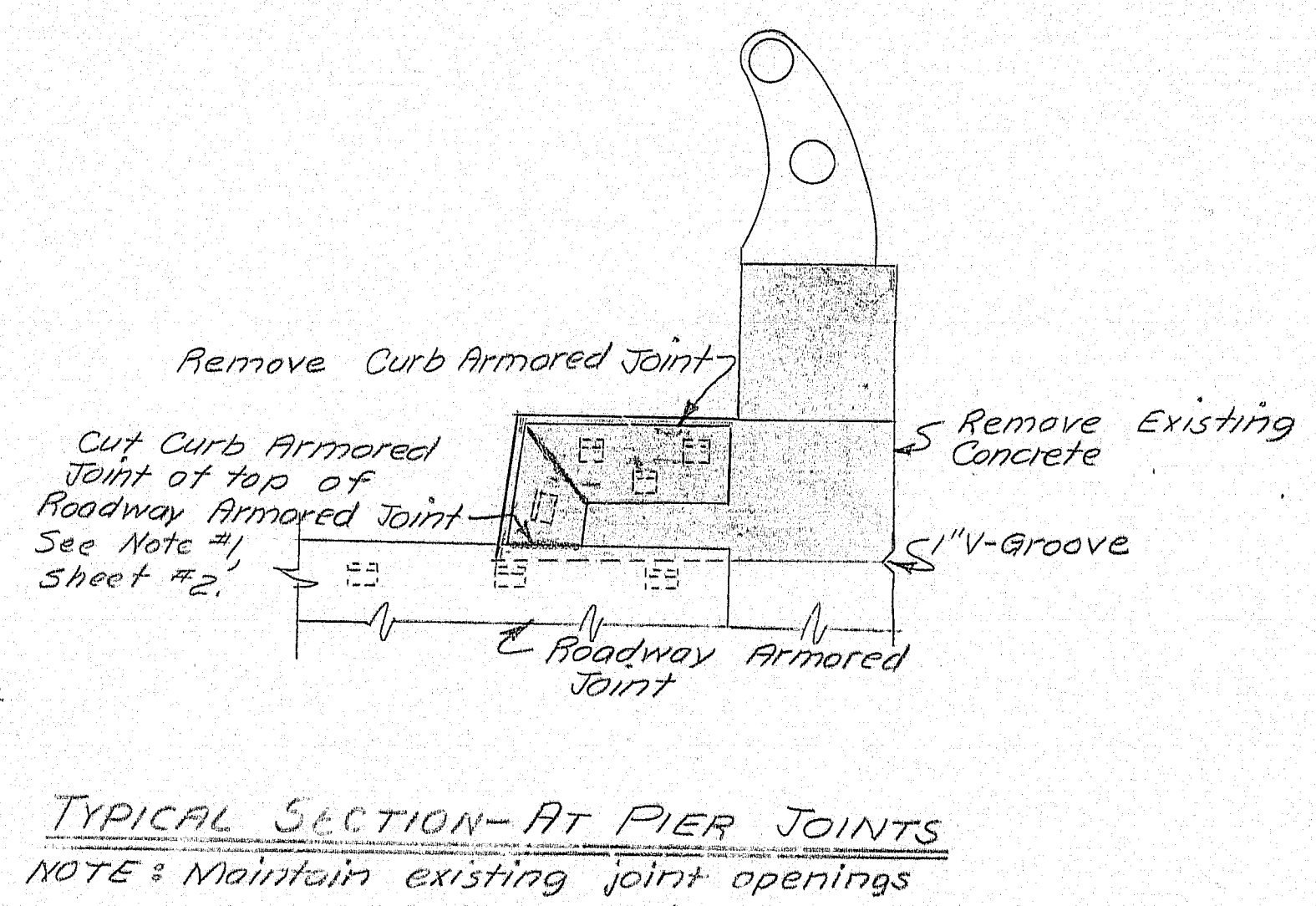
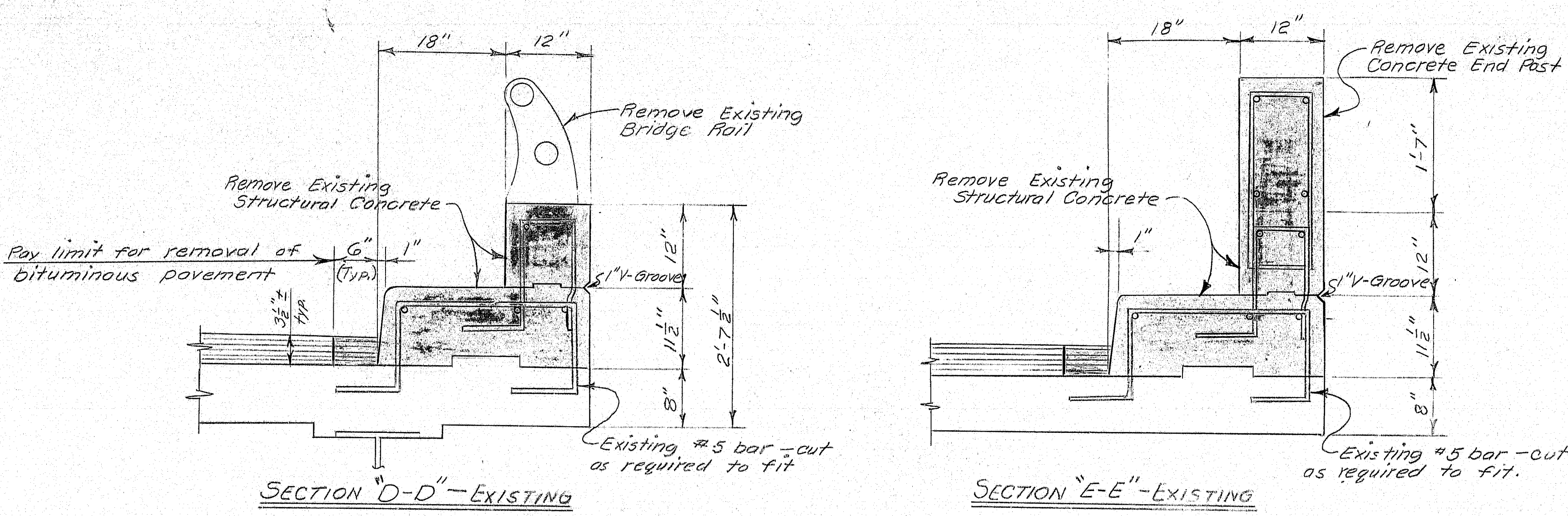
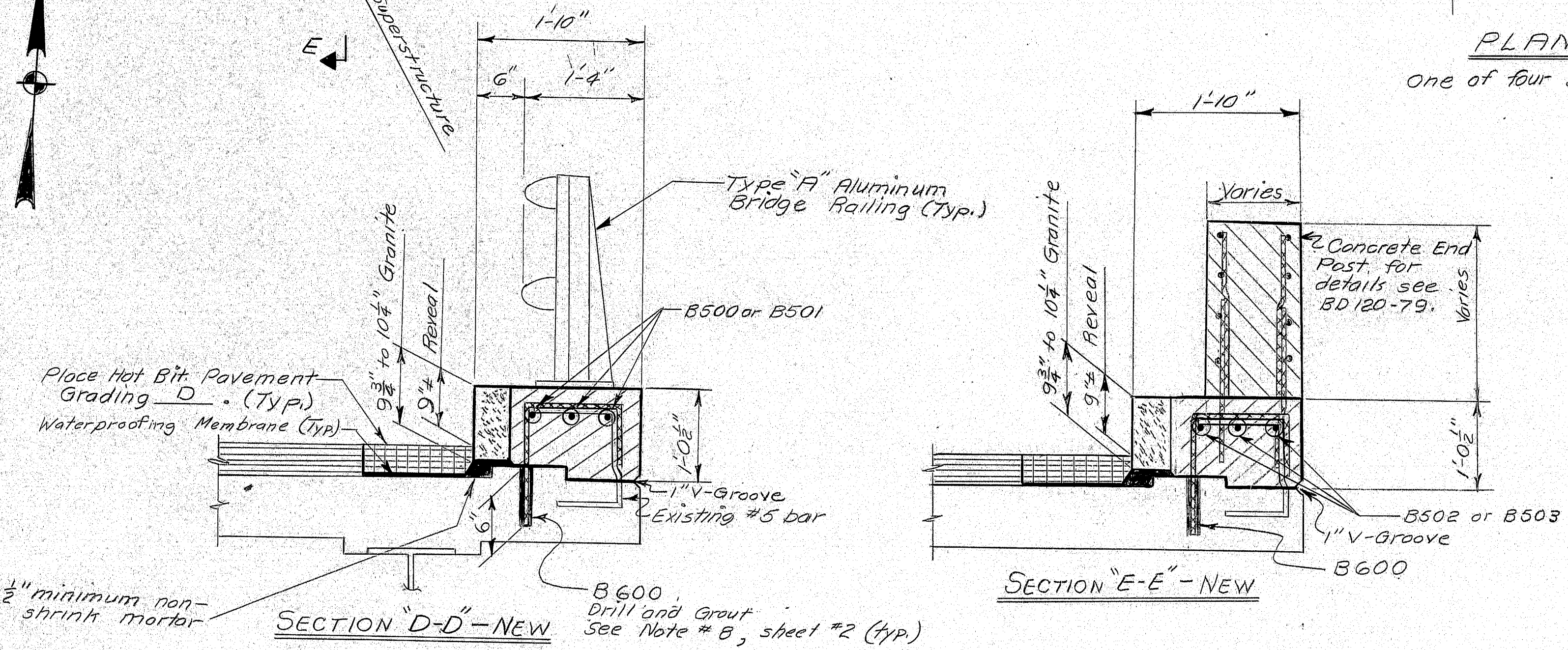


F.H.W.A. REG. NO.	STATE	PROJECT NUMBER	SHEET NO.	TOTAL SHEETS
1	MAINE	956(54)105	7	18



- Existing Concrete
- Existing Material to be removed
- New Concrete
- Existing Hot Bituminous Pavement
- New Hot Bituminous Pavement

#### LEGEND OF SECTIONS



REFERENCES  
Concrete End Posts - BD 120-79 - Sh #13.  
Aluminum Bridge Railing - BD 114-77 - Sh #12.

Revised as Built - D. Sherlock, 1-26-81

STATE OF MAINE  
DEPARTMENT OF TRANSPORTATION

INTERSTATE 95  
OVER  
M.C.R.R. 8  
COUNTY ROAD  
IN THE CITY OF  
WATERVILLE  
KENNEBEC COUNTY  
CURBS & RAILINGS

SHEET 7 OF 18 AUGUSTA, MAINE Nov. 1979

172-121

PROJECT DESIGN ENGINEER	DATE
JET	10/79
CHECKED	DATE
G.D.	2/80
REVISIONS	DATE
FIELD CHANGES	

JANUARY 1980